

INSTALLATION INSTRUCTIONS

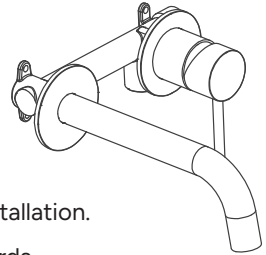
Premiere 304SS Wall Basin Tap

Mains Pressure Installation Only

ATTENTION PLUMBER

For best performance and to maintain customer satisfaction, please follow the guidelines below:

- Thoroughly flush all plumbing lines before beginning installation.
- Installation must comply with the AS/NZS 3500 standards.
- The maximum allowable operating pressure for any building is 500 kPa. Exceeding this limit can result in water hammer, premature wear on fixtures and appliances, and excessive noise throughout the system.
- A pressure-limiting valve is required if the supply pressure exceeds 500 kPa.



TECHNICAL INFORMATION

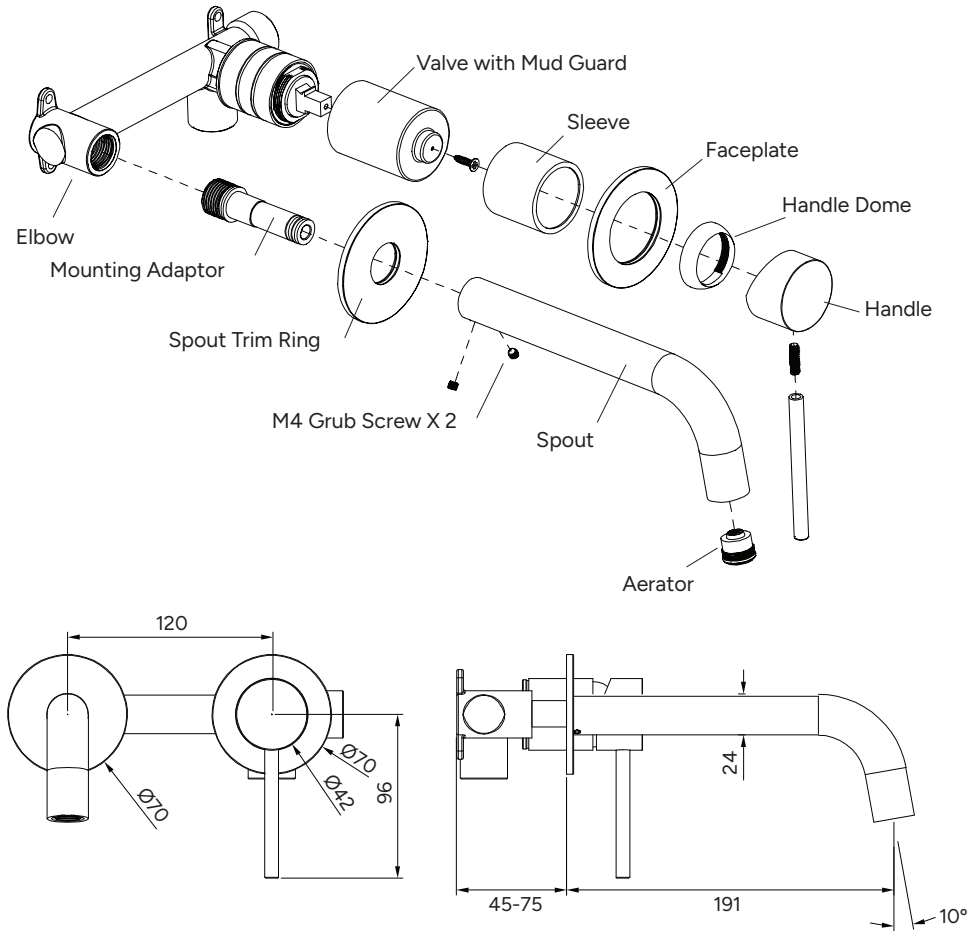
- This product is designed for high-pressure water systems only.
- It is not suitable for gravity-fed cylinders or low/unequal pressure installations.
- Minimum operating pressure: 150 kPa
- Maximum operating pressure: 500 kPa
- Maximum hot water temperature: 50°C
- If water temperature exceeds 50°C, an approved tempering valve must be installed.

**Please leave this document with the product once installed.
For full warranty terms and conditions, please visit Codeinteriors.co.nz**

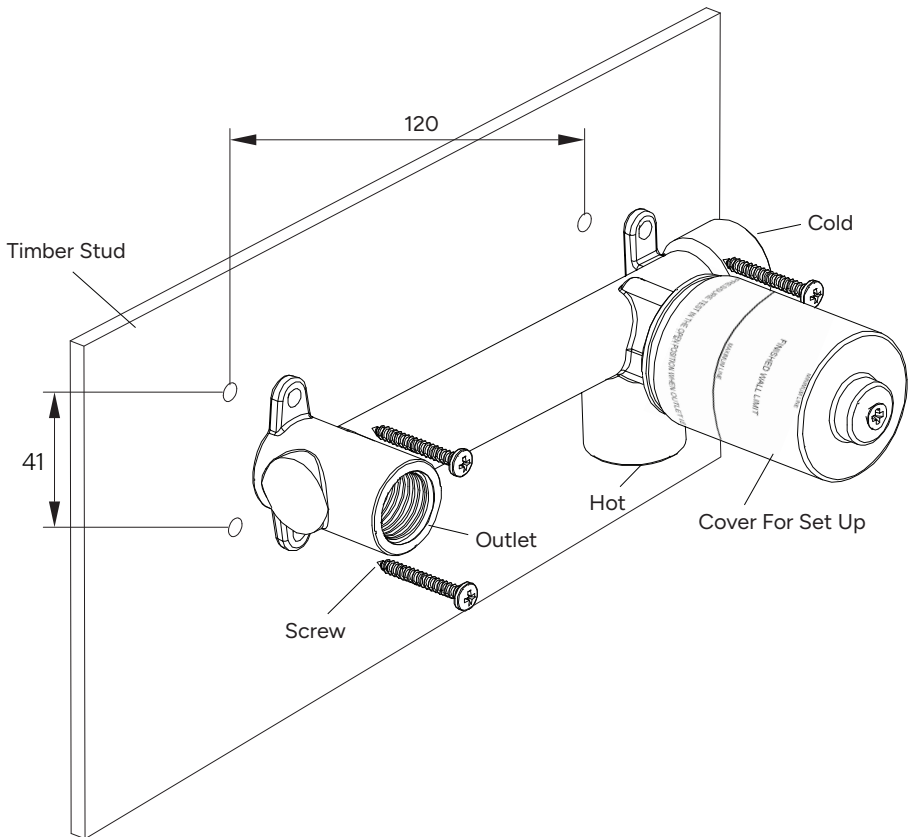
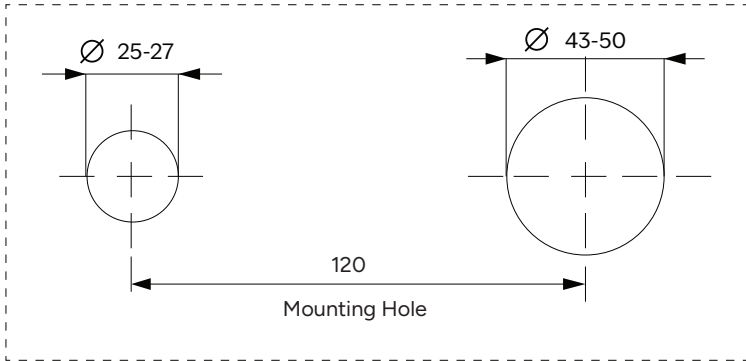
INSTALLATION

Valve body: ½" BSP female connections.

Note: Do not pressure-test with valve in the open position when the outlet is closed.



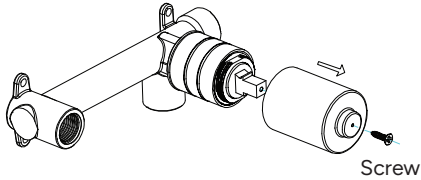
*All measurements are in millimetres. Sizes are nominal.



INSTALLING TRIM

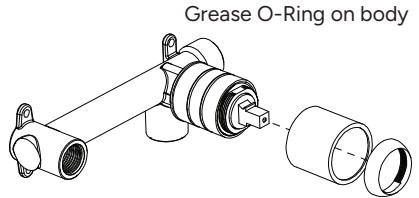
STEP 1.

Remove the screw and take off the plastic cover case.



STEP 2.

Plug on and screw the cover sleeve onto the cartridge and screw the handle dome down.

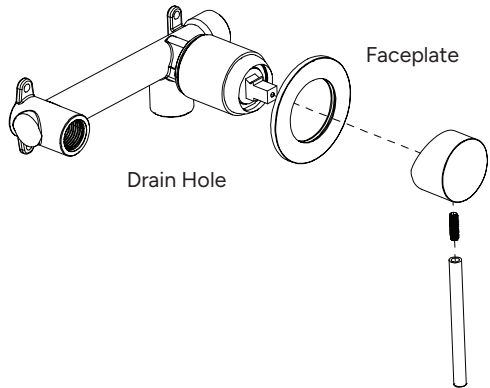


STEP 3.

Face Plate: Position plate against the wall.

Ensure seal is in place on the inside of plate for valve body.

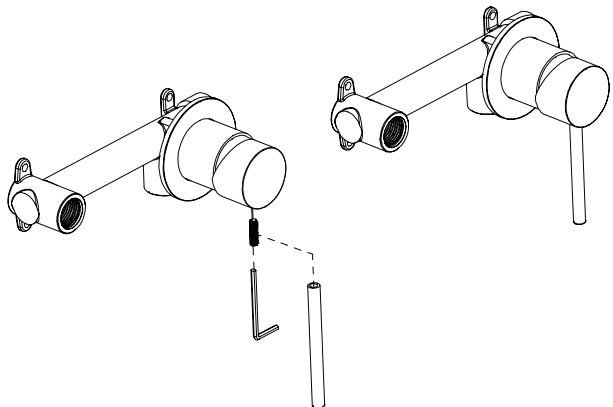
Sealant will be required behind faceplate on uneven surfaces for water seal.



STEP 4.

Plug the handle onto the cartridge and screw it tightly by allen key.

Screw the pin handle firmly into the handle.

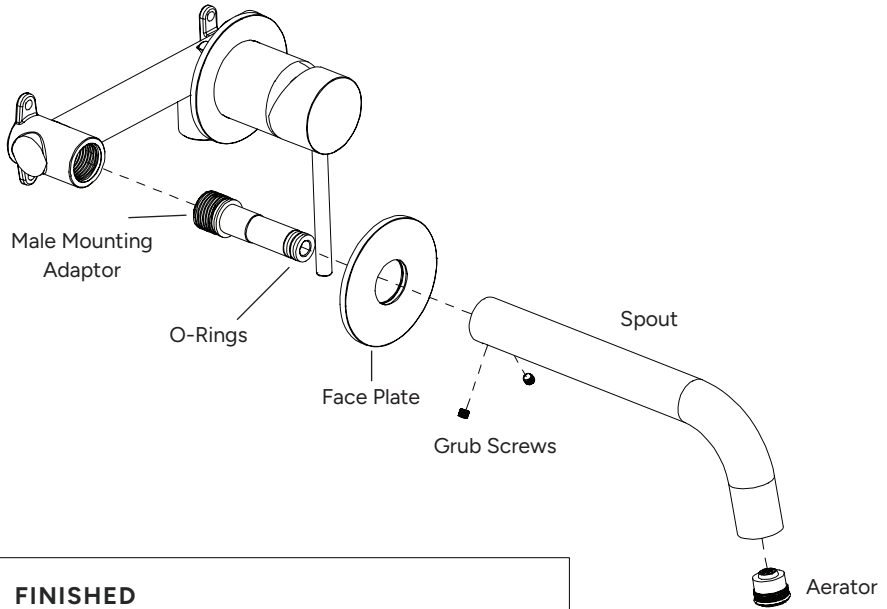


STEP 5.

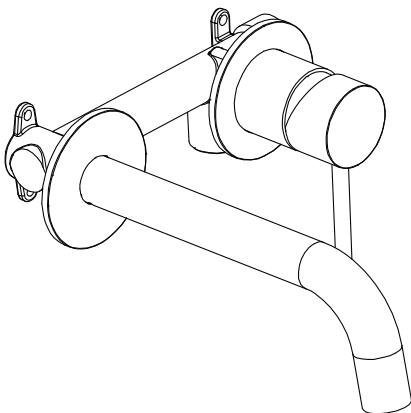
Screw the male adaptor inside the spout outlet.

Position flange over spout and install spout to mounting adaptor and tighten grub screws. Grease o-rings on adaptor.

- A. Ensure grub screws are not protruding in spout bore.
- B. Ensure seal is in place on the inside of plate for spout body.
- C. Sealant will be required behind faceplate on uneven surfaces for water seal.



FINISHED



CARE & MAINTENANCE

- Clean the tap regularly using a soft cloth and mild, non-abrasive soap solution.
- Avoid using acidic, alkaline, or abrasive cleaners, scouring pads, or harsh chemicals, as they can damage the surface finish and internal components.
- After cleaning, rinse thoroughly with fresh water and dry with a soft cloth to prevent water spotting and mineral build-up.
- Periodically check all visible connections for signs of leaks, looseness, or wear.
- Ensure the hot and cold supply pressures remain within the manufacturer's recommended limits to protect the cartridge and prolong service life.
- For mixers installed in hard-water environments, consider routine descaling of the aerator and filters to maintain performance.

Regular maintenance will help preserve appearance, ensure smooth operation, and extend the lifespan of the basin mixer.

WARRANTY

TERM 10 YEARS

(5 YEARS PARTS & LABOUR, 5 YEARS PARTS ONLY)

- This wall basin tap is covered by a manufacturer's warranty that applies to defects in materials or workmanship under normal residential use.
- The warranty period begins from the original date of purchase; proof of purchase is required for all claims.
- The warranty applies only when the product has been installed by a licensed plumber and maintained in accordance with the care and maintenance guidelines.
- The warranty does not cover damage resulting from incorrect installation, misuse, accidental damage, alterations, chemical exposure, or normal wear and tear.
- Components such as cartridges, seals, and aerators may have separate warranty terms or may be considered consumable items.
- If a defect is confirmed, the manufacturer will repair, replace, or supply replacement parts at their discretion. Labour, removal, or re-installation costs may not be covered.
- For any warranty enquiry, contact the supplier or manufacturer with details of the issue, installation date, and proof of purchase.

A properly installed and maintained wall basin mixer will provide reliable service and ensure full warranty protection.

