

## INSTALLATION INSTRUCTIONS

# Code Versa 304SS Bath Filler With Mixer

Mains Pressure Installation Only

### ATTENTION PLUMBER

For best performance and customer satisfaction, please follow these requirements:

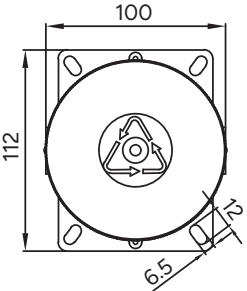
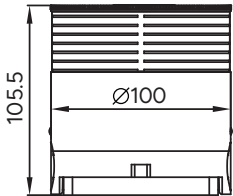
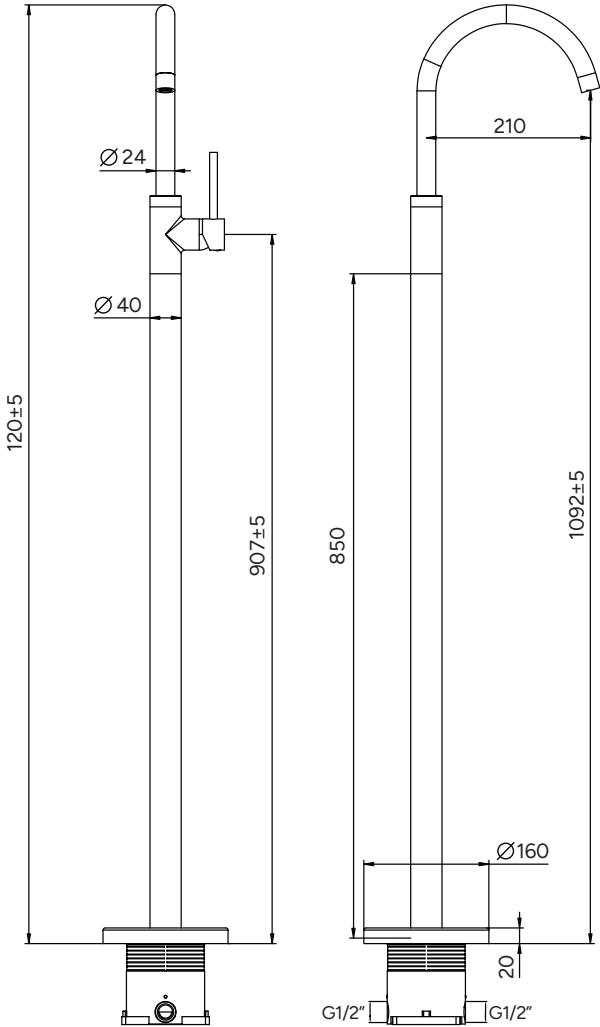
- Thoroughly flush all plumbing lines before beginning installation.
- Installation must comply with the AS/NZS 3500 standards.
- The maximum allowable operating pressure for any building is 500 kPa. Exceeding this limit can result in water hammer, premature wear on fixtures and appliances, and excessive noise throughout the system.
- A pressure-limiting valve is required if the supply pressure exceeds 500 kPa.

### TECHNICAL INFORMATION

- This product is designed for high-pressure water systems only.
- It is not suitable for gravity-fed cylinders or low/unequal pressure installations.
- Minimum operating pressure: 150 kPa
- Maximum operating pressure: 500 kPa
- Maximum hot water temperature: 50°C
- If water temperature exceeds 50°C, an approved tempering valve must be installed.

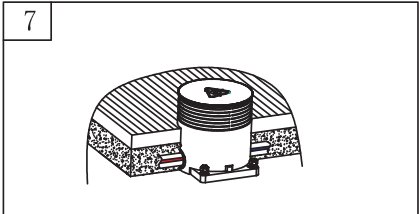
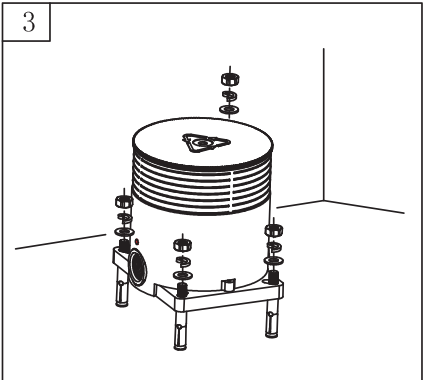
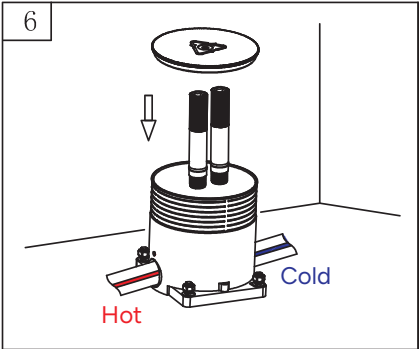
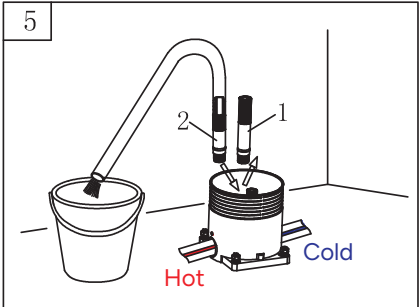
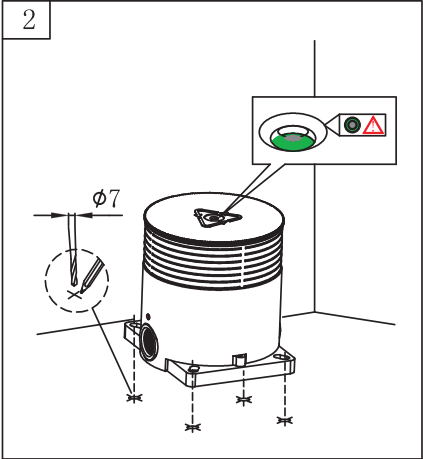
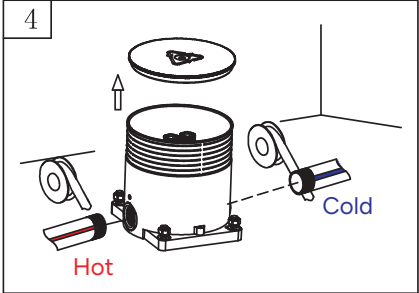
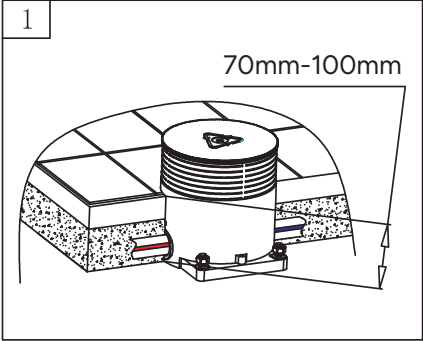
**Please leave this document with the product once installed.  
For full warranty terms and conditions, please visit [Codeinteriors.co.nz](https://codeinteriors.co.nz)**

# SPECIFICATION



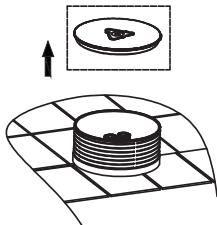
\*All measurements are in millimetres. Sizes are nominal.

# INSTALLATION - EMBEDDED BODY

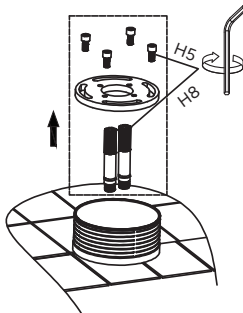


# INSTALLATION - SPOUT

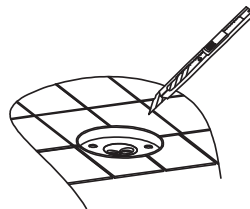
1. Open the embedded box cover.



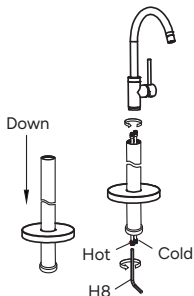
2. Remove the plate and plug by hexagon screw.



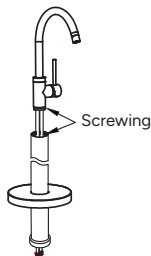
3. Cut the embedded box along the tiles surface by knife.



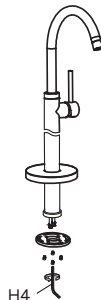
4. Install the cover plate from the top of the tube. Connect the inlet pipes to the body by hexagon screw.



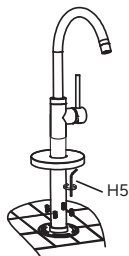
5. Connect the straight tube to the mixer body.



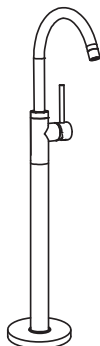
6. Connect the plate to the tube through the screws by hexagon screw.



7. Put the inlet pipes into the relative holes of the embedded box. Adjust the holes of the embedded box. Adjust the position of the spout. Connect the plate into the embedded box through the plate screws.



8. Total assembly picture.



## CARE & MAINTENANCE

- Clean regularly using a soft cloth and mild, non-abrasive soap solution.
- Avoid using acidic, alkaline, or abrasive cleaners, scouring pads, or harsh chemicals, as they can damage the surface finish and internal components.
- After cleaning, rinse thoroughly with fresh water and dry with a soft cloth to prevent water spotting and mineral buildup.
- Periodically check all visible connections for signs of leaks, looseness, or wear.
- Ensure the hot and cold supply pressures remain within the manufacturer's recommended limits to protect the cartridge and prolong service life.
- For mixers installed in hard-water environments, consider routine descaling of the aerator and filters to maintain performance.

Regular maintenance will help preserve appearance, ensure smooth operation, and extend the lifespan of the floor mounted spout.

# WARRANTY

## **TERM 10 YEARS**

### **(5 YEARS PARTS & LABOUR, 5 YEARS PARTS ONLY)**

- This floor mounted bath filler is covered by a manufacturer's warranty that applies to defects in materials or workmanship under normal residential use.
- The warranty period begins from the original date of purchase; proof of purchase is required for all claims.
- The warranty applies only when the product has been installed by a licensed plumber and maintained in accordance with the care and maintenance guidelines.
- The warranty does not cover damage resulting from incorrect installation, misuse, accidental damage, alterations, chemical exposure, or normal wear and tear.
- Components such as cartridges, seals, and aerators may have separate warranty terms or may be considered consumable items.
- If a defect is confirmed, the manufacturer will repair, replace, or supply replacement parts at their discretion. Labour, removal, or reinstallation costs may not be covered.
- For any warranty enquiry, contact the supplier or manufacturer with details of the issue, installation date, and proof of purchase.

A properly installed and maintained floor mounted bath filler will provide reliable service and ensure full warranty protection.