

INSTALLATION INSTRUCTIONS

Premiere 304SS Basin Mixer

(Standard & Tall) Mains Pressure Installation Only

ATTENTION PLUMBER

For best performance and to maintain customer satisfaction, please follow the guidelines below:

- Thoroughly flush all plumbing lines before beginning installation.
- Installation must comply with the AS/NZS 3500 standards.
- The maximum allowable operating pressure for any building is 500 kPa. Exceeding this limit can result in water hammer, premature wear on fixtures and appliances, and excessive noise throughout the system.
- A pressure-limiting valve is required if the supply pressure exceeds 500 kPa.

TECHNICAL INFORMATION

- This product is designed for high-pressure water systems only.
- It is not suitable for gravity-fed cylinders or low/unequal pressure installations.
- Minimum operating pressure: 150 kPa
- Maximum operating pressure: 500 kPa
- Maximum hot water temperature: 50°C
- If water temperature exceeds 50°C, an approved tempering valve must be installed.

**Please leave this document with the product once installed.
For full warranty terms and conditions, please visit Codeinteriors.co.nz**

INSTALLATION

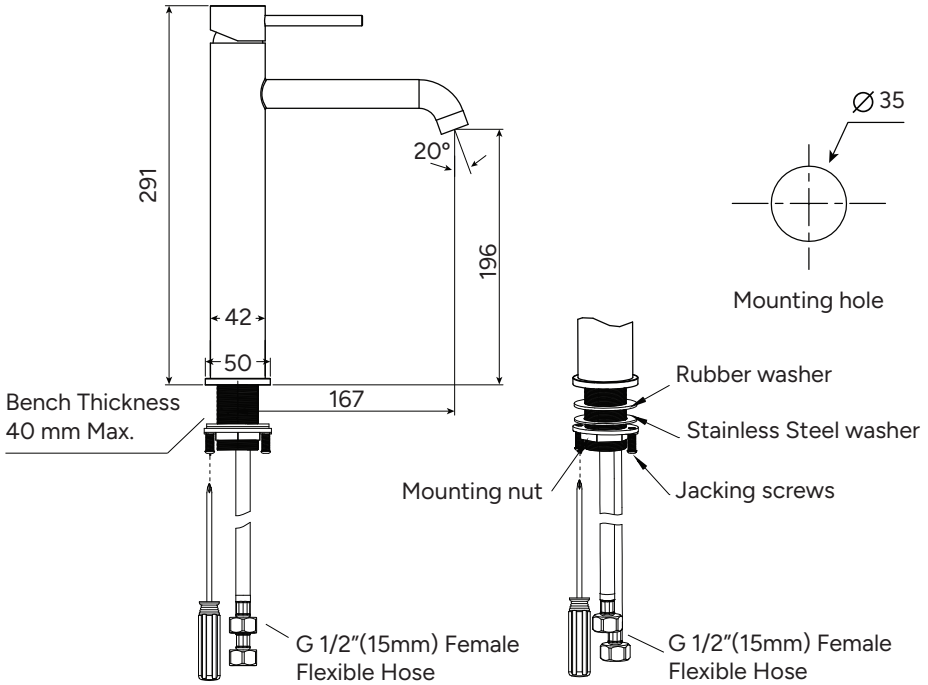
BENCH TOPS

- For Formica or timber benchtops, provide additional support beneath the surface to secure the installation.
- For stainless steel benchtops, ensure the mounting washer is positioned directly against the steel.
- For vitreous china surfaces, a supplementary bead of sealant may be required around the mixer base to achieve a proper watertight seal.

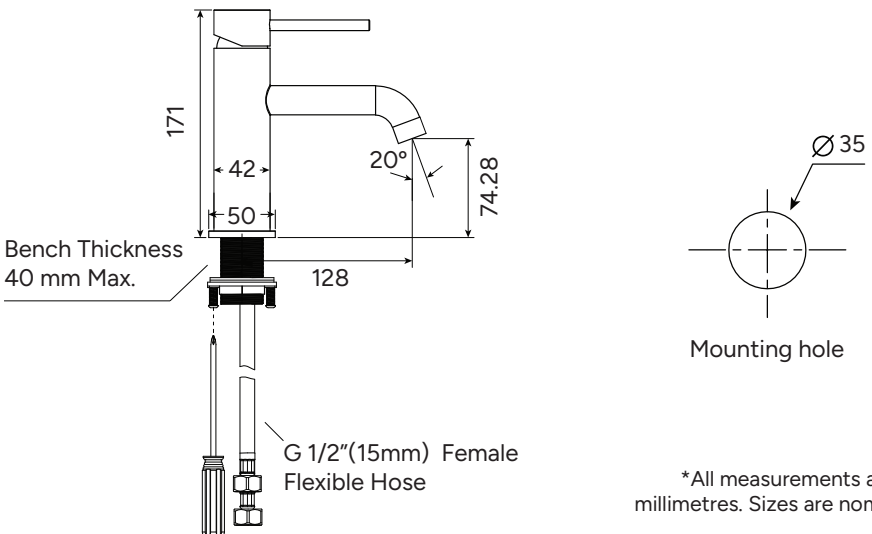
Maximum compatible bench thickness: 40mm.

To install the mixer, create a 35mm diameter hole in the benchtop.

TALL BASIN MIXER



STANDARD BASIN MIXER



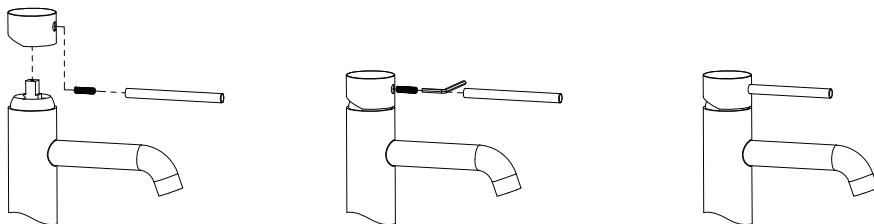
*All measurements are in millimetres. Sizes are nominal.

INSTALLATION INSTRUCTIONS

1. Remove the mounting nut, steel washer, and rubber washer from the mounting thread.
 2. Confirm the threaded steel mounting tube is firmly fixed to the mixer body.
 3. Verify the seal is correctly seated within the groove on the underside of the mixer flange.
 4. Feed the mixer and attached hoses through the mounting hole and align it in the required position on the benchtop.
 5. From below, place the rubber washer onto the mounting thread, followed by the steel washer, and then thread on the mounting nut.
 - A. Tighten initially with an 38mm spanner. Do not overtighten.
 - B. Then tighten the jacking screws.
 6. Connect the flexible hoses to the water supply.
 - A. Union nuts must be attached to 15 mm fittings with a properly machined, chamfered face—avoid using cut or “sawn off” threaded tube.
 - B. Avoid overtightening. Hand-tighten, then apply an additional quarter turn using a spanner.
 - C. Do not kink, stretch, or twist the hoses; any bends must have a minimum radius of 85 mm.
 7. Turn on water supply and inspect all connections for leaks.
-

HANDLE INSTALLATION

Plug the handle onto the cartridge and screw it tightly by allen key.
Screw the pin handle firmly into the handle.



CARE & MAINTENANCE

- Clean the tap regularly using a soft cloth and mild, non-abrasive soap solution.
- Avoid using acidic, alkaline, or abrasive cleaners, scouring pads, or harsh chemicals, as they can damage the surface finish and internal components.
- After cleaning, rinse thoroughly with fresh water and dry with a soft cloth to prevent water spotting and mineral build-up.
- Periodically check all visible connections for signs of leaks, looseness, or wear.
- Ensure the hot and cold supply pressures remain within the manufacturer's recommended limits to protect the cartridge and prolong service life.
- For mixers installed in hard-water environments, consider routine descaling of the aerator and filters to maintain performance.

Regular maintenance will help preserve appearance, ensure smooth operation, and extend the lifespan of the basin mixer.

WARRANTY

TERM 10 YEARS

(5 YEARS PARTS & LABOUR, 5 YEARS PARTS ONLY)

- This basin mixer is covered by a manufacturer's warranty that applies to defects in materials or workmanship under normal residential use.
- The warranty period begins from the original date of purchase; proof of purchase is required for all claims.
- The warranty applies only when the product has been installed by a licensed plumber and maintained in accordance with the care and maintenance guidelines.
- The warranty does not cover damage resulting from incorrect installation, misuse, accidental damage, alterations, chemical exposure, or normal wear and tear.
- Components such as cartridges, seals, and aerators may have separate warranty terms or may be considered consumable items.
- If a defect is confirmed, the manufacturer will repair, replace, or supply replacement parts at their discretion. Labour, removal, or reinstallation costs may not be covered.
- For any warranty enquiry, contact the supplier or manufacturer with details of the issue, installation date, and proof of purchase.

A properly installed and maintained basin mixer will provide reliable service and ensure full warranty protection.

