

## INSTALLATION INSTRUCTIONS

# Premiere 304SS Shower Mixer

Mains Pressure Installation Only

### ATTENTION PLUMBER

For best performance and to maintain customer satisfaction, please follow the guidelines below:

- Ensure all pipework is thoroughly flushed before installation.
- Installation must comply with the AS/NZS 3500 standards.
- The water pressure within a building must not exceed 500 kPa. Pressures above this level may lead to water hammer, shorten the lifespan of fixtures and appliances, and create excessive noise within the plumbing system.
- Where pressures exceed 500 kPa, a pressure-limiting valve is required.

### TECHNICAL INFORMATION

- This product is designed for high-pressure water systems only.
- It is not suitable for gravity-fed cylinders or low/unequal pressure installations.
- Minimum operating pressure: 150 kPa
- Maximum operating pressure: 500 kPa
- Maximum hot water temperature: 50°C
- If the water temperature is higher than 50°C, an approved tempering valve must be installed.

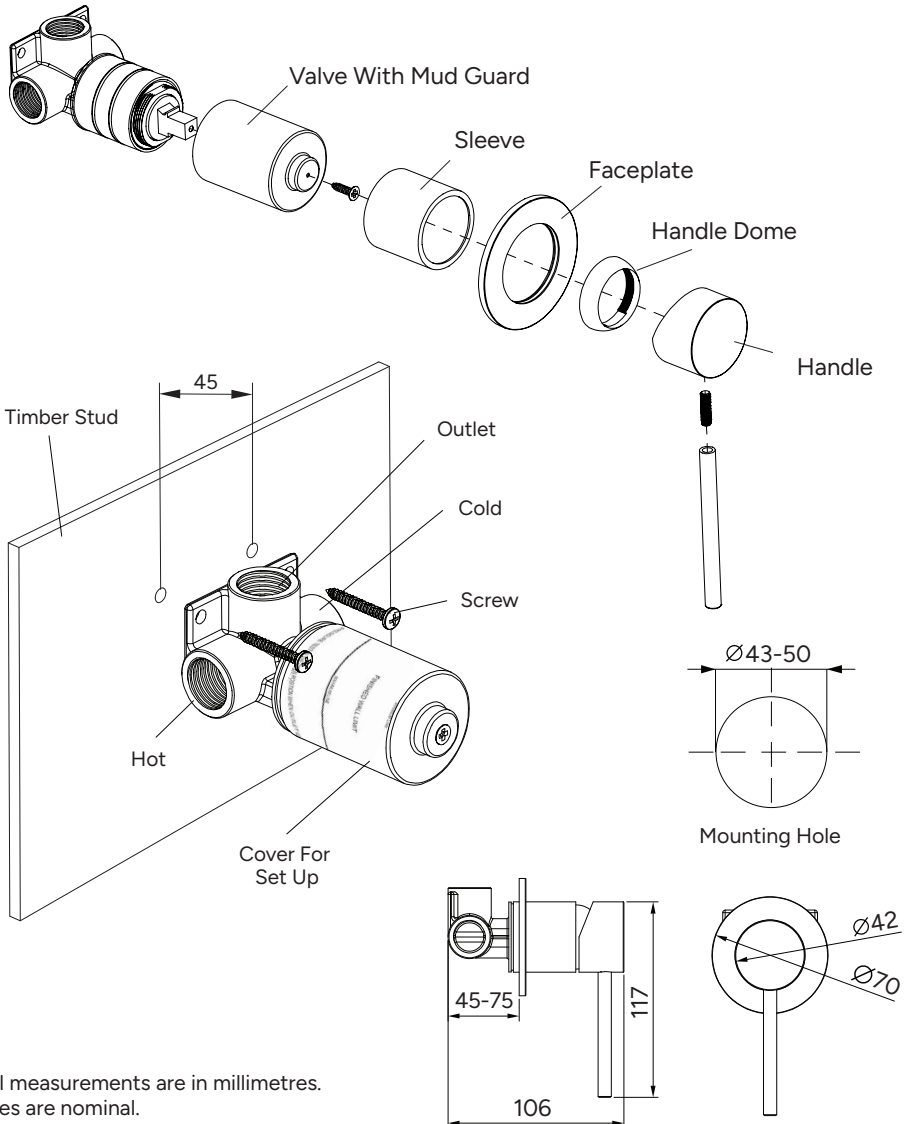
**Please leave this document with the product once installed.  
For full warranty terms and conditions, please visit [Codeinteriors.co.nz](https://codeinteriors.co.nz)**

# INSTALLATION

**Valve body:** ½" BSP female connections.

**Finished wall cut-out:** 43mm – 50mm (precision cuts required for small face plate).

**Note:** Do not pressure test with valve in the open position when the outlet is closed.

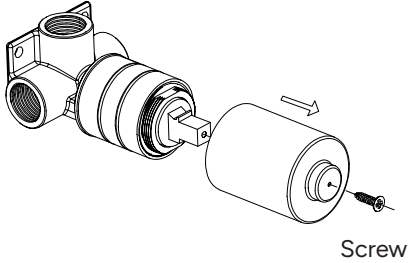


\*All measurements are in millimetres.  
Sizes are nominal.

# INSTALLING TRIM

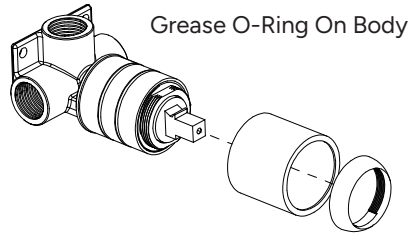
## STEP 1.

Remove the screw and take off the plastic cover case.



## STEP 2.

Plug on and screw the cover sleeve onto the cartridge and screw the handle dome down.

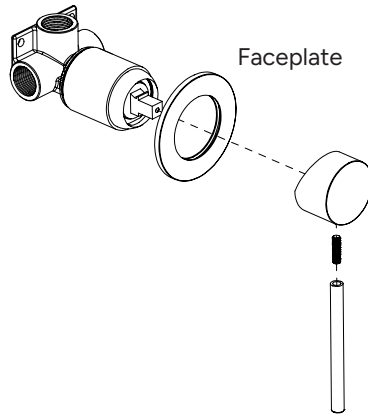


## STEP 3.

Faceplate: Position plate against wall.

Ensure seal is in place on the inside of plate for valve body.

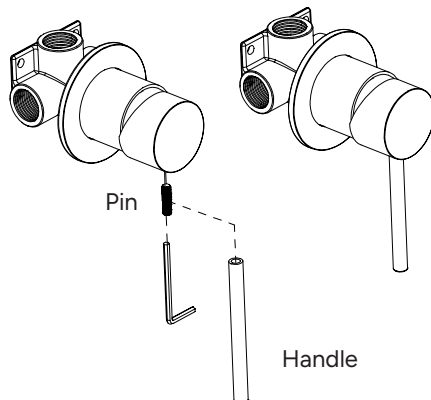
Sealant will be required behind faceplate on uneven surfaces for water seal.



## STEP 4.

Plug the handle onto the cartridge and screw it tightly by allen key.

Screw the pin handle firmly into the handle.



## CARE & MAINTENANCE

- Clean the mixer regularly using a soft cloth and mild, non-abrasive soap solution.
- Avoid using acidic, alkaline, or abrasive cleaners, scouring pads, or harsh chemicals, as they can damage the surface finish and internal components.
- After cleaning, rinse thoroughly with fresh water and dry with a soft cloth to prevent water spotting and mineral build-up.
- Periodically check all visible connections for signs of leaks, looseness, or wear.
- Ensure the hot and cold supply pressures remain within the manufacturer's recommended limits to protect the cartridge and prolong service life.
- For mixers installed in hard-water environments, consider routine descaling of the aerator and filters to maintain performance.

Regular maintenance will help preserve appearance, ensure smooth operation, and extend the lifespan of the shower mixer.

# WARRANTY

## **TERM 10 YEARS**

### **(5 YEARS PARTS & LABOUR, 5 YEARS PARTS ONLY)**

- This shower mixer is covered by a manufacturer's warranty that applies to defects in materials or workmanship under normal residential use.
- The warranty period begins from the original date of purchase; proof of purchase is required for all claims.
- The warranty applies only when the product has been installed by a licensed plumber and maintained in accordance with the care and maintenance guidelines.
- The warranty does not cover damage resulting from incorrect installation, misuse, accidental damage, alterations, chemical exposure, or normal wear and tear.
- Components such as cartridges, seals, and aerators may have separate warranty terms or may be considered consumable items.
- If a defect is confirmed, the manufacturer will repair, replace, or supply replacement parts at their discretion. Labour, removal, or reinstallation costs may not be covered.
- For any warranty enquiry, contact the supplier or manufacturer with details of the issue, installation date, and proof of purchase.

A properly installed and maintained shower mixer will provide reliable service and ensure full warranty protection.





