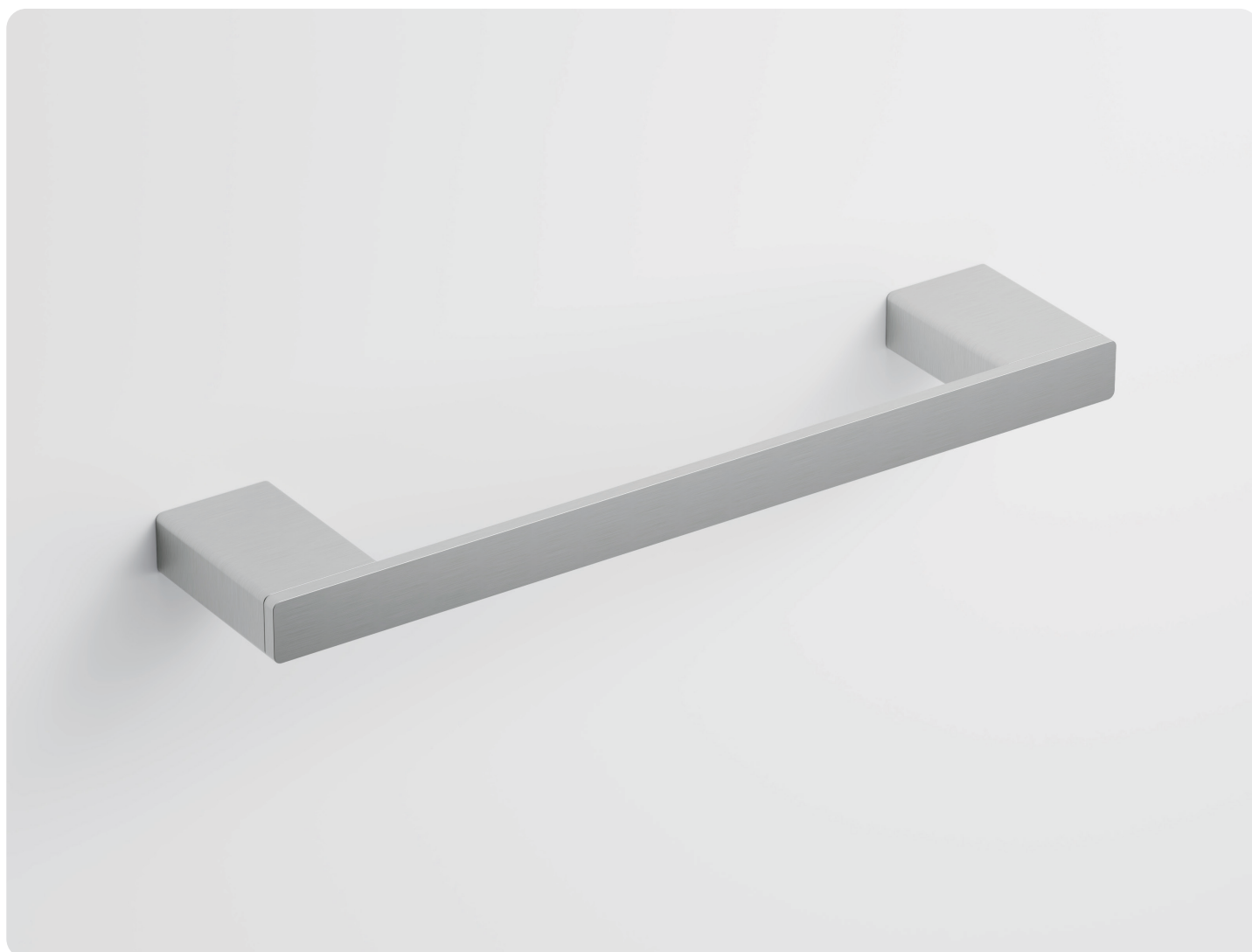


PRODUCT SPECIFICATION SHEET



LINEARE HAND TOWEL RAIL 300

Model:	CA-41002	Warranty:	2 year
Size:	300 mm	Weight:	0.72kg
Material:	304 Stainless Steel		

Colour Range:



Chrome

Matte Black

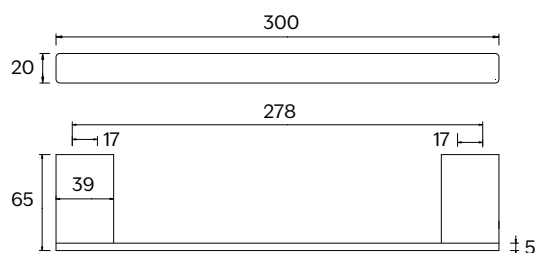
Gun Metal
(PVD)



Brushed Brass
(PVD)

Brushed Nickel
(PVD)

Brushed Bronze
(PVD)



Note: All measurements shown are in millimetres. Sizes are nominal.

Distributed by:

CODE
INTERIORS

In accordance with our continuous product development, Code interiors sizes and specifications outlined in these specifications are subject to change without notice. Information detailed in this document represents the actual product available at the time of printing this sheet. For the latest version of this technical sheet please visit www.codeinteriors.co.nz or contact your nearest stockist to confirm any questions prior to purchase.

sales@codeinteriors.co.nz | 09 973 4066 | www.codeinteriors.co.nz