

CODE
INTERIORS



INSTALLATION GUIDE

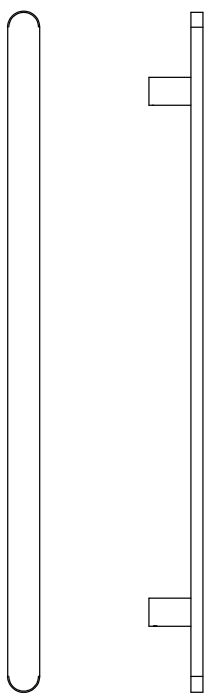
Lineare Vertical Heated Towel Rail



IMPORTANT - Please read instructions prior to installation.

Introduction

The Code Lineare Vertical Rail range has been designed in New Zealand by industry professionals to represent outstanding quality and a timeless design to compliment all bathroom styles.



Specifications:

Ingress Protection: IP55

Material: 304 Stainless Steel

Size: 850mm

Voltage/ Wattage: All 12V / 18 Watts

Wiring: Universal, cable can enter top or bottom.

Colour Finishes:



Black



Chrome



Gunmetal



Brushed
Nickel



Brushed
Brass



Brushed
Bronze

Standards: Manufactured and tested to AS/NZS 60335.2.43

See page 9 for Warranty information.

Safety Information

Please follow the basic safety instructions when you use our electric heated towel rail / ladder products.

Please read these instructions carefully. Keep them handy for future reference.

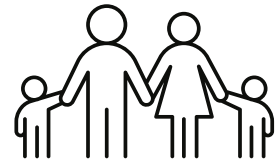


DO NOT immerse in any liquid.

DO NOT allow the power cord to make contact with any hot surface when it is working.



Check the product thoroughly BEFORE installation. If there is a problem, bring it to the attention of the wholesaler immediately.



WARNING: The bottom of this product MUST be installed at least 600mm above the floor in order to avoid risk of harm to young children.

- The appliance is used for warming and drying towels, therefore it is hot to touch. Young children should be supervised when the product is working to ensure that they do not touch the appliance.
- The appliance will feel hotter to touch during summer periods because of the rise in ambient temperature. The insulation effect of towels will cause the operating temperature to increase.
- The appliance should be installed so that switches and other controls cannot be touched by a person in the bath or shower.
- This appliance is ONLY used for warming and drying towels. DO NOT use it for any other purpose.
- To avoid danger this product MUST NOT be used to carry towels or any other articles that have been in contact with oil, petroleum based products or dry cleaning fluids.
- Make sure the voltage complies with the specification on the rating label, or elsewhere in these instructions.
- For your safety and others, make sure the electrical work is done by an authorised person according to AS/NZS 3000:2000 Wiring Rules and Regulations.

Care Instructions

Note: Damage caused by improper use or negligent cleaning is not covered by warranty. Refer to warranty terms and conditions.

Every 3 weeks use a soft, clean cloth moistened with warm soapy water to clean off any debris. Dry rail afterwards.

Fine scratches in the Chrome (only) finish can be removed with Autosol or Brasso paste, both of which are available from supermarkets and car care outlets throughout New Zealand.

DO NOT clean with any corrosive or abrasive cleaning agents, including steel wool / scourers.

DO NOT use any cleaning agents containing acids.



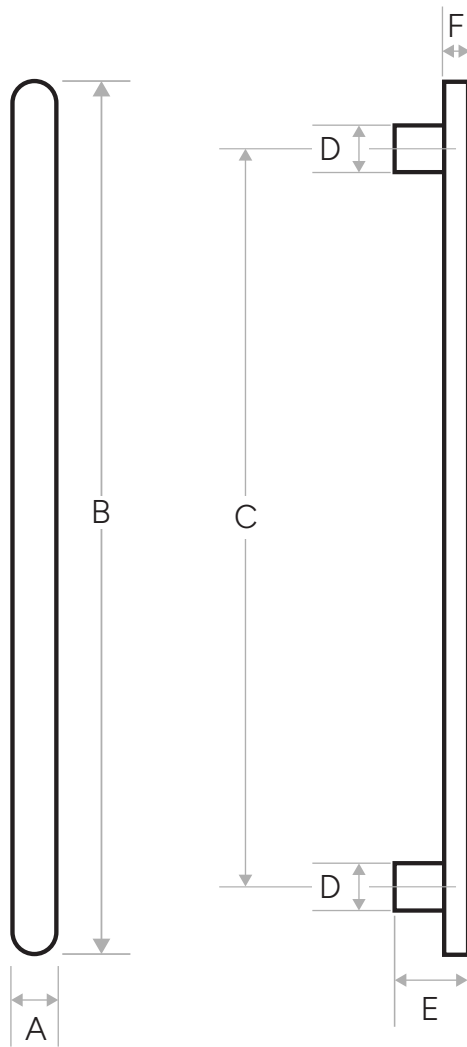
Warranty Conditions

This warranty will apply only under all of the following conditions:

- The item has been installed by a qualified tradesmen.
- If failure is due to a fault in the manufacturing of the product.
- Proof of purchase (including the date of purchase) is provided.

This warranty does not cover products purchased as ex-display with out being fully checked and tested for sale by the manufacturer.

Lineare Vertical Rail Specification



Variations:

Rail Size	A	B	C	D	E	F
850mm	40mm	850mm	650mm	35mm	67.5mm	15mm

Disclaimer: All measurements are in mm and are nominal.

Installation Guide

Thank you for choosing to install our Code Interiors Lineare Vertical Heated Towel Rail. We have prepared these instructions to help you install the product both easily and successfully.

Warning:

- This appliance **MUST** be installed by a licensed and registered electrician.
- In order to avoid hazards for children, this appliance shall be installed so the lowest part of the rail is at least 600mm above the finished floor level.
- If the supplied cord is damaged it must be replaced by the manufacturer prior to installing.
- Code Interiors single heated rails power should be supplied by an approved transformer which provides 12 volts and sufficient output power to the specification of the product (see product rating label). The transformer must not be over loaded. Our Code Transformer must be used (sold separately).

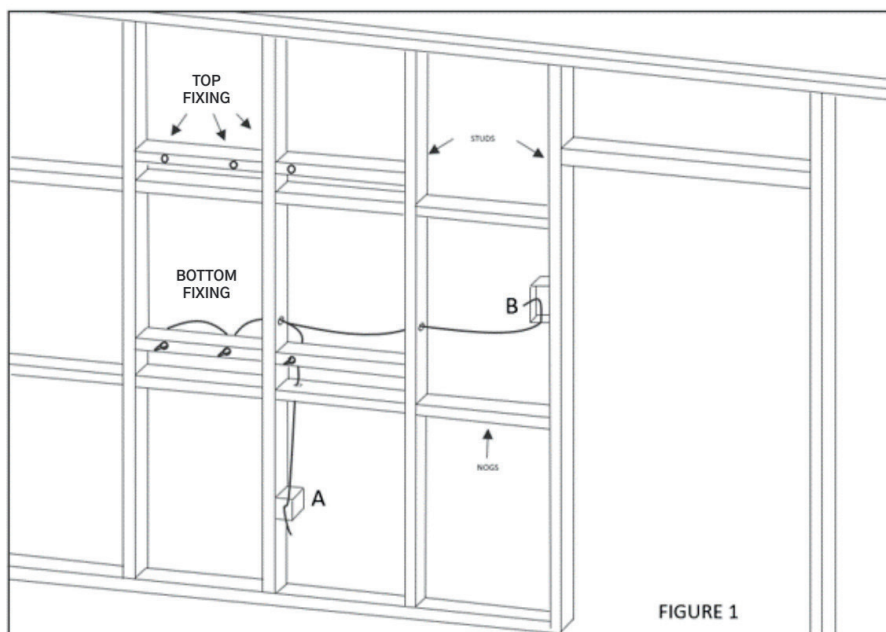
Installation Guide

Pre-Wire Stage:

Vertical Rail Setup
(Top or bottom wired)

A - Power switch location
near rails (recommended)

B - Power switch location
near door



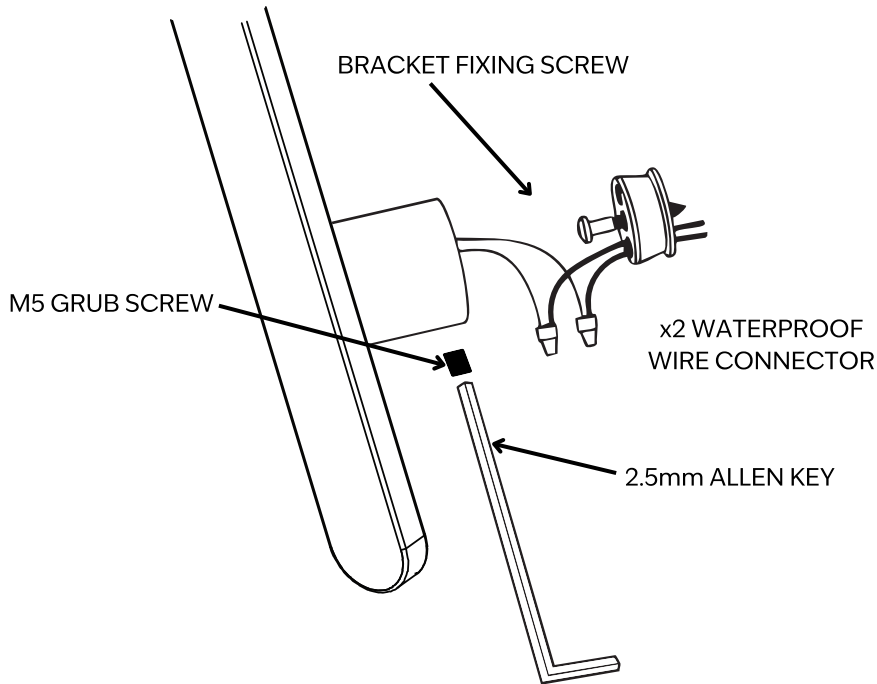
Prior to wall linings you need to prewire your towel rails. To do this you need to:

- 1) Agree with the end user or designer on exact positioning considering other fixtures in the bathroom and heights for ease of use – take into account the actual length towels hanging on them to avoid fowling on anything, For example a vanity drawer or toilet roll holder. We typically recommend around 250mm between the bars.
- 2) Once the positioning/ layout has been confirmed, ensure there is a timber nog fitted behind both feet of the heated rail. This timber will be used firstly to secure the pre-wires in place for the duration of the painting and tiling stages. The timber will also be used to secure the wall fixing brackets after the painting or tiling. **Simply fixing into Gib with expanding wall plugs is not acceptable and may void warranty.**
- 3) Once the wiring side is selected (Note: Code Single Vertical Rails are universal top or bottom wired.) Mark the centre of the rail foot and drill holes to feed wire through.

Drawer/loop the wire though each hole and run back to the switch location where the transformer will be located later. Ensure you secure the wire on both sides of the fixing timber (you can use glue/silicone or electrical tape) so it cannot slip back into the wall whilst other trades are performing their work. This is important, if the wire slips out of position the Gib fixer or tiler will not know there is a wire to expose making it risky business later trying to relocate it.

Installation Guide

Final Fit-Off:

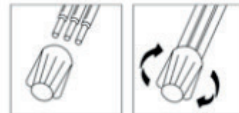


- 1) Mark out your rail feet central locations and drill through wall linings until you hit the fixing timber.
- 2) Once the holes are drilled it is time to fit the mounting brackets to the wall – Feel free to use a small amount of silicone to prevent any chance of the fixings coming loose in years to come. To fit the wall fixings use the stainless screws provided. Simply place rail fixing bracket against the wall and screw into the timber nog until securely fixed.
- 3) Repeat this again until all brackets are on wall. Once all the wall fixing brackets are fitted with the wires extending through it is time to fit the rail/s to the wall.
- 4) To fit the Rail/s to the wall, back off the fixing grub screws on top and bottom of the rail – dry fit the rail first to make sure feet are set right.

FIGURE 2

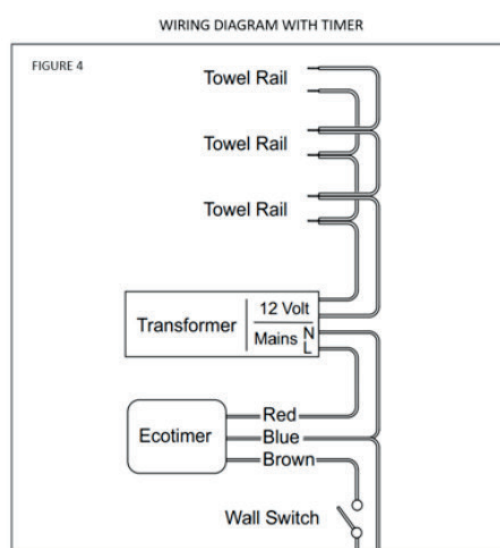
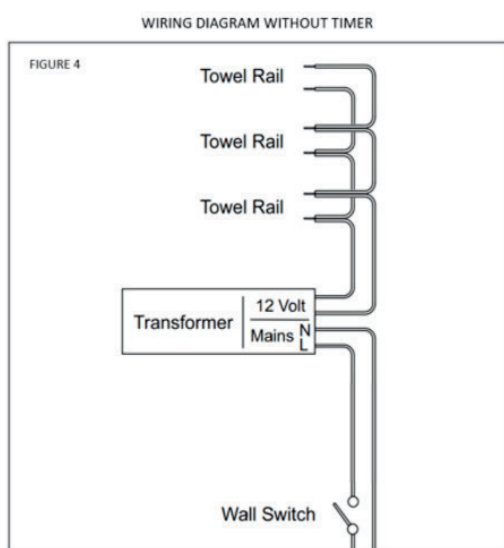
CORRECT USE OF WATERPROOF WIRENUTS

- Strip wires 12.7mm (1/2").
- Align any frayed strands or conductors.
- Pre-twisting unnecessary. Place stripped wires together with ends of insulation even.
- Twist connector onto wires pushing firmly until hand tight (do not over torque).
- Wipe sealant in and around conductors and connector opening while tightening. **DO NOT REUSE.**



Installation Guide

- 5) Once the rail fits correctly to the wall prepare both ends of the wires to be joined (rail side and wall side) Twist the wires together then thread into the provided water proof wirenut – keep twisting in the same direction until you are happy the connection is good and there is no metal part of the wire outside the connector – It is normal to see some of the water proof grease squeeze out. See figure 2
- 6) Once you are happy with the connection push the wires and joiners up into the recess in the body of the rail, then present the rail to the wall brackets. Once the rail is hard against the wall it is time to tighten the fixing grub screws until the Rail is firmly mounted to the wall and does not wobble at all. Repeat steps 4,5 and 6 until all rails are installed.



Once all the rails are installed, complete the wiring on the transformer and switch side The Towel rail must have a switch in the bathroom that can be identified as the towel rail switch. This can be either located near the set of rails, or a separate mechanism on the light switch plate for the bathroom. e.g. 3 gang switch plate – lights – extractor – Towel rail.

Once wiring is complete turn on power and check all rails are heating – You will begin to feel heat within just a few minutes. Your installation is now complete. Please kindly leave the care and maintenance instructions with the owner.

Note: The installer and home owner have the option of fitting a timer. See figure 4. For prolonged element life and energy conservation we recommend that Code single bar rails should be connected to a timer set to 25% usage or less (timer is sold seperately).

Warranty Terms & Conditions

1. The purchaser carefully follows all instructions packed with the product;
2. The purchaser carefully follows the installation instructions provided and complies with the electrical wiring regulations;
3. The purchaser carefully follows the instructions provided in the installation guide relating to the proper use and care of the product and does not use the product for any other purpose other than which it has been designed;
4. This product was purchased and installed in New Zealand or Australia;
5. This warranty does NOT extend to:
 - A. Damage to the surface coatings caused by cleaning or maintenance using products not recommended in the installation guide;
 - B. Defects caused by normal wear and tear, accidents, negligence;
 - C. The product has been dismantled, repaired personally rather than by a professional service man;
 - D. The product has been misused, abused, incorrectly installed, connected to an electrical supply not corresponding with the rated specification, or subjected to power surges;
6. If this product fails to work well, please get in contact with Code Interiors or from whom you purchased this product from. When you do this, please make sure the purchase invoice or receipt is presented with the product. After you get a fixed or replaced product, the warranty period will be the balance of the original warranty period.
7. If the warranty period is expired, the product should be presented to a qualified electrical service agent or authorised professional worker to be fixed. Related costs will be at the customer's expense.

Warranty Period

At Code Interiors, we are committed to providing only the highest quality products on the market. To give you complete confidence in your purchase, all our products come with a comprehensive peace-of-mind warranty.

Vertical Heated Towel Rails

Residential	5 Year Product & Parts	2 Year Labour Coverage	3 Year Finishes
Commercial	1 Year Replacement Products or Parts Only		

